

***dCS* Vivaldi Transport II**  
Upsampling CD / SACD Transport

**User Manual**  
Software Release 1.0x  
October 2023

Part No: DCS406659 – V01

© Data Conversion Systems Ltd. 2023

All rights reserved. No part of this publication may be reproduced, stored in or introduced into a retrieval system, or transmitted in any form, or by any means (electronic, mechanical, photocopying, recording or otherwise) without the prior written permission of *dCS*<sup>1</sup>. Any person who does any unauthorised act in relation to this publication may be liable to criminal prosecution and civil claims for damages.

Information contained in this manual is subject to change without notice, and whilst it is checked for accuracy, no liabilities can be accepted for errors.

---

<sup>1</sup> *dCS* is Data Conversion Systems Ltd. Company registered in England No. 2072115.



## Contents

<b>Using the dCS Vivaldi Transport II for the first time .....</b>	<b>5</b>
What's in the box?	5
Positioning the unit	5
Important Safety Instructions	6
Condensation	6
FCC Compliance Statement	7
Safety Notice	8
Laser Radiation	9
Which types of disc can be played?	9
Which types of disc can NOT be played?	9
<b>Step-by-Step Guide .....</b>	<b>10</b>
Preliminaries	10
STEP 1 – Connecting a Digital Output	11
Connecting the Dual AES interface	11
Connecting the AES3 or an SPDIF output	11
STEP 2 – Choosing a Sync Mode	12
Using the DAC in Master Mode	12
Using a Master Clock	13
STEP 3 – Playing a Disc	14
Controlling Disc playback with the app	14
Further suggestions	15
<b>Front Panel .....</b>	<b>16</b>
Display	16
Remote Control Receiver	17
CD Tray	17
Stop / Eject Button	17
Play / Pause Button	17
Rwd Button	17
Fwd Button	17
Menu Button	17
Power Button	18
<b>Rear Panel .....</b>	<b>19</b>
AES Digital Outputs	19
SPDIF Digital Outputs	19
Word Clock Input / Output	19
IR Remote Receiver	19
RS232 interface	20
Mains inlet	20
Label	20
<b>The Menu .....</b>	<b>21</b>
Using the Menu	22
INFORMATION Menu	23
Unit Status	23
Version	23
Contact	23
Update	23
TRANSPORT SETTINGS Menu	24
Layer	24
PCM Enable	24
Upsampling Mode	24
RS232 Mode	24
CONFIGURATION Menu	25
Settings Lock	25
Save Configuration	25
Restore Configuration	25
Factory Reset	25
DISPLAY SETTINGS Menu	26
Brightness	26
Display On/Off	26

---

GENERATOR Menu	26
Channel Check	26
Phase Check	26
Burn In	26
<b>Specification .....</b>	<b>27</b>
<b>Maintenance and Support.....</b>	<b>28</b>
Service and Maintenance	28
Replacing a Blown Mains Fuse	28
Cleaning the case	28
Limited Warranty	29
If you need more help	30
Software History	30
<b>Index .....</b>	<b>31</b>

## USING THE *dCS* VIVALDI TRANSPORT II FOR THE FIRST TIME

Congratulations on purchasing your *dCS* Vivaldi Transport II.

Before using your unit, please read this section and the Step by Step Guide. This will enable you to set the unit up quickly and safely with your hi-fi system.

From time to time, *dCS* will release updated firmware on CD that you can install yourself using the "Update" menu option. Please check our web-site occasionally to see if new Vivaldi firmware is available, or consult your dealer.

### What's in the box?

Check that the box contains the following items:

- *dCS* Vivaldi Transport II
- Manual and Menu Guide
- Power cable
- 2x AES cable
- BNC cable
- 2 spare fuses

Notify your dealer as soon as possible if anything is missing or damaged. We suggest that you retain the original packaging for possible future use. If this is not possible, replacement packaging can be ordered from *dCS* or our distributors. Details can be found on our web site at [www.dcsaudio.com](http://www.dcsaudio.com).

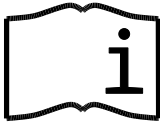
### Positioning the unit

For best sound quality, the units in the Vivaldi range are designed to be mounted on separate shelves of a rack, although they may be stacked directly on top of each other if this is absolutely necessary. Place each unit on a firm, vibration free base, allowing convenient connection to the other parts of your system. To prevent overheating, we recommend that you leave some free space around the unit to allow for ventilation.



With all feet screwed fully home, the unit will sit level on a flat surface. If you need to do any levelling, you can unscrew any of the feet up to 3 complete turns, to give up to 3mm (1/8") of height adjustment.

## Important Safety Instructions



The following statements are required to comply with U.S. safety standard UL60065.

- Read these instructions.
- Keep these instructions.
- Heed all warnings.
- Follow all instructions.
- Do not use this apparatus near water.
- Clean only with dry cloth.
- Install in accordance with the manufacturer's instructions.
- Do not install near any heat sources such as radiators, heat registers, stoves, or other apparatus (including amplifiers) that produce heat.
- Do not defeat the safety purpose of the grounding-type plug. A grounding type plug has two blades and a third grounding prong. The third prong is provided for your safety. If the provided plug does not fit into your outlet, consult an electrician for replacement of the obsolete outlet.
- Protect the power cord from being walked on or pinched particularly at plugs, convenience receptacles, and the point where they exit from the apparatus.
- Only use attachments/accessories specified by the manufacturer.
- Unplug this apparatus during lightning storms or when unused for long periods of time.
- Refer all servicing to qualified service personnel. Servicing is required when the apparatus has been damaged in any way, such as power-supply cord or plug is damaged, liquid has been spilled or objects have fallen into the apparatus, the apparatus has been exposed to rain or moisture, does not operate normally, or has been dropped.

## Condensation

If the Transport is cold and is moved into a warm room, condensation will form inside the unit. This may interfere with normal operation. Remove the Transport from its packaging and let it stand for 1-2 hours, to allow it to reach room temperature and the condensation to evaporate.

## FCC Compliance Statement



This equipment has been tested and found to comply with the limits for a Class B digital device, pursuant to part 15 of the FCC Rules.

These limits are designed to provide reasonable protection against harmful interference in a residential installation. This equipment generates, uses and can radiate radio frequency energy and, if not installed and used in accordance with the instructions, may cause harmful interference to radio communications. However, there is no guarantee that interference will not occur in a particular installation.

You can determine whether this equipment is causing interference by turning it off. If the interference stops, it was probably caused by the equipment or a peripheral device.

If your equipment does cause interference to radio or television reception, try to correct the interference by one or more of the following measures:

- Turn the television or radio antenna until the interference stops.
- Move the equipment to one side or the other of the television or radio.
- Move the equipment farther way from the television or radio.
- Plug the equipment into an outlet that is on a different circuit from the television or radio. (That is, make certain the equipment and the television or radio are on circuits controlled by different circuit breakers or fuses.)

(USA only) If necessary consult *dCS* Americas or an experienced radio / television technician for additional suggestions.

Changes or modifications not expressly approved by *dCS* Americas Inc. could void the manufacturer's warranty.

This product has demonstrated electromagnetic interference compliance under conditions that included the use of compliant peripheral devices and shielded cables between system components. In order to maintain compliance with FCC regulations, shielded cables (including Ethernet network cables) must be used with this equipment. Operation with non-approved equipment or unshielded cables is likely to result in interference to radio and TV reception.

### Responsible party (contact for FCC matters only):

*dCS* Americas LLC,  
PNC Bank Bldg,  
300 Delaware Ave, Suite 210,  
Wilmington, DE 19801,  
USA

## Safety Notice



In the event of the unit developing a fault, please contact your dealer in the first instance.

If you decide to remove safety covers for any reason, disconnect the power cable first. Note that removing covers voids the warranty.

To maintain protection from electric shock, the unit **MUST** be connected to mains earth (ground) via the power cable. Also, unearthed systems do not give the best sonic performance.

Protect the product from dripping or splashing liquids. Liquid-filled objects such as vases must not be placed on the product.



This product is not suitable for operation at altitudes above 2000m.



This product is lead-free and complies with the RoHS directive.

Before connecting the power cable to the unit for the first time, please check that it has been set to the correct operating voltage for your mains supply. The unit's voltage setting is shown on the serial number label. If this does not match your local supply voltage, **DO NOT** attempt to use the unit. Contact your dealer to have the unit reset. Using the unit with the wrong mains setting for your local supply may result in serious damage to the unit and will invalidate the warranty. Do not attempt to reset the voltage yourself.

We do not recommend the use of mains regenerators. However, if you do wish to use a mains regenerator with variable voltage and frequency, we recommend that you set the voltage to match your local voltage and the frequency to either 50Hz or 60Hz **ONLY**.



Damage caused to your Vivaldi Transport II by misuse of a mains regenerator or by a malfunctioning mains regenerator is not covered by the warranty.



Disposal at end-of-life - the symbol indicates that this product should not be treated as normal household waste. It should be recycled, so please take it to an approved collection facility.

## Laser Radiation



dCS Vivaldi Transport II is a Class 1 Laser Product, it complies with U.S. FDA 21CFR subchapter J. In normal use, there is no risk of exposure to laser radiation.



The case should only be opened by authorised service personnel. The case protects the user from indirect exposure to visible and invisible laser radiation, as well as risk of electric shock.

## Which types of disc can be played?



Commercially manufactured CDs can be played if they:

- are 12cm or 8cm round discs
- are recorded with linear PCM digital audio data
- carry the Compact Disc Digital Audio logo and meet the “Red-Book” standard.



Commercially manufactured single-layer SACDs or hybrid SACD/CD discs can be played if they:

- are 12cm or 8cm round discs
- are recorded with DSD digital audio data on the SACD layer
- carry the Super Audio CD logo and meet the “Scarlet-Book” standard.

### CD-R

CD-R or CD-RW discs recorded with audio data in CD format may be playable, but this depends on the disc, the software and the burner used to record on the disc. Similarly,

### CD-RW

DVD-R discs burned with an SACD image may be playable. dCS cannot accept responsibility for any difficulty encountered while attempting to play such discs.

## Which types of disc can NOT be played?

dCS cannot accept responsibility for any difficulty encountered while attempting to play the following types of disc:

- Scratched, damaged or dirty discs.
- Non-circular or novelty discs, such as square or heart-shaped.
- Printed or labelled CD-Rs or discs contaminated with glue or other sticky substances.



Contaminated discs may get stuck to the turntable inside the unit. If this happens, a service charge will be made for removing the disc and repairing any damage.

- DVD, CD-G, CD-EXTRA, PHOTO CD, CD-ROM or DVD-ROM.
- Discs recorded with digital audio data that is not in CD-format or SACD-format (e.g. FLAC or WAV files).
- Copy-protected discs that do not conform to the “Red-Book” CD standard may not play correctly or may not play at all. Such discs are not CDs – they are optical discs that have been recorded with digital audio data. They should not carry the Compact Disc Digital Audio logo – but some do. If you encounter any difficulty playing such discs, please contact the disc manufacturer and demand a **genuine CD** in exchange.

## STEP-BY-STEP GUIDE

This section guides you through setting up the unit for basic operation.

### Preliminaries

The Menu Guide sheet details the menu structure.

For digital interfaces, use with cables designed for digital audio:

- for AES/EBU interfaces use 110Ω screened, twisted pair cables fitted with one male XLR connector and one female XLR connector.
- for Word Clock or SPDIF BNC interfaces, use 75Ω coax cables fitted with BNC plugs.



Word Clock interfaces require a simple DC-coupled connection. The interfaces may malfunction or not work at all if capacitor coupled cables or cables with built-in networks are used.

- for SPDIF RCA interfaces, use 75Ω coax cables fitted with RCA Phono plugs.

Connect the power cable supplied to the power inlet on the Transport rear panel, plug the other end into a convenient power outlet.



Please do not use an excessively heavy or inflexible power cable as this may damage the power inlet connector.



The cables supplied with the unit are “commercial grade”, because most owners will have their own “audiophile grade” cables or will prefer to make their own cable choices.

Set the rocker switch near the mains inlet to the **I** position. Press the **Power** button – the unit will display **Vivaldi Transport II**. Wait about 30 seconds while the Transport configures itself.

If the unit is likely to be set in an unfamiliar state, you can run the **Factory Reset** routine by pressing the buttons in this sequence: **Menu**, **▶**, **▶**, **Menu**, **◀**, **◀**, **Menu**.

Wait a few seconds while the unit resets itself.

## STEP 1 – Connecting a Digital Output

Whether you are playing a CD or an SACD, the **AES1+2** interface carries DSD data and all of the PCM outputs carry 16/44.1 PCM data. Most owners connect the **AES1+2** interface only, but some prefer to listen to CDs in the native 16 bit 44.1kS/s format.

### Connecting the Dual AES interface

When used with a Vivaldi DAC, **AES1+2** is the main output.

- Connect the **AES1** output on the Transport to the AES1 input on the Vivaldi DAC rear panel and the **AES2** output to the AES2 input, using two XLR cables. Ensure the cables are not swapped.
- Press the DAC's **Input** button repeatedly until **AES1+2** is displayed.



The DAC will lock to the source, displaying the **Audio Sync** icon and **DSD**.

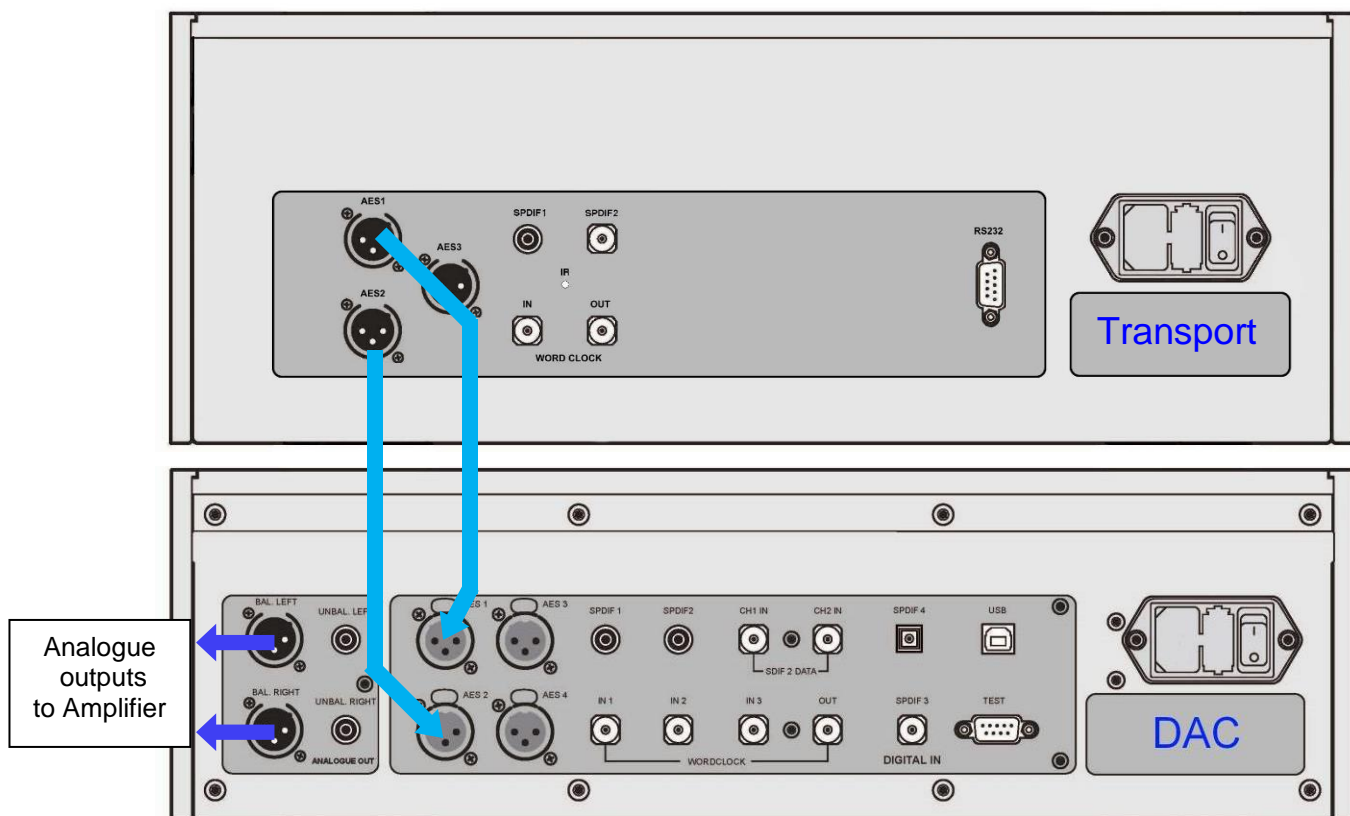


Figure 1 – Basic setup



You can connect the Transport to the DAC's **AES3+4** input if you wish, but this input has special features which are intended for use with the Vivaldi Upsampler.

**Connecting the AES3 or an SPDIF output**

- Connect one of the outputs on the Transport to the matching input on the DAC using a suitable cable.
- Press the DAC **Input** button repeatedly until your chosen input is displayed. This will be either **AES1**, **AES2**, **AES3**, **AES4**, **SPDIF1 (RCA)** or **SPDIF2 (BNC)**.



The DAC will lock to the source, displaying the **Audio Sync** icon and **0/44.1**.

**Why does the DAC display 0/44.1? Is the Transport faulty?**

No, the Transport is working correctly. When a CD is loaded but is not playing, a 44.1kS/s carrier signal is being transmitted but there is no data – just digital silence. The DAC correctly reports zero active data bits until the disc starts playing, then it detects 16 active bits and updates the display. **0/44.1** may be displayed briefly between tracks also.

**Proceed to Step 2.**

## STEP 2 – Choosing a Sync Mode

So far, the system has been set up to lock to the clock generated by the source. This is the simplest arrangement, but it does not give the best sonic performance due to clock jitter.

### Using the DAC in Master Mode

If you have a Vivaldi Clock, go to the next page.

You can reduce the jitter in your system by using the Vivaldi DAC in Master mode and slaving the Transport to it.

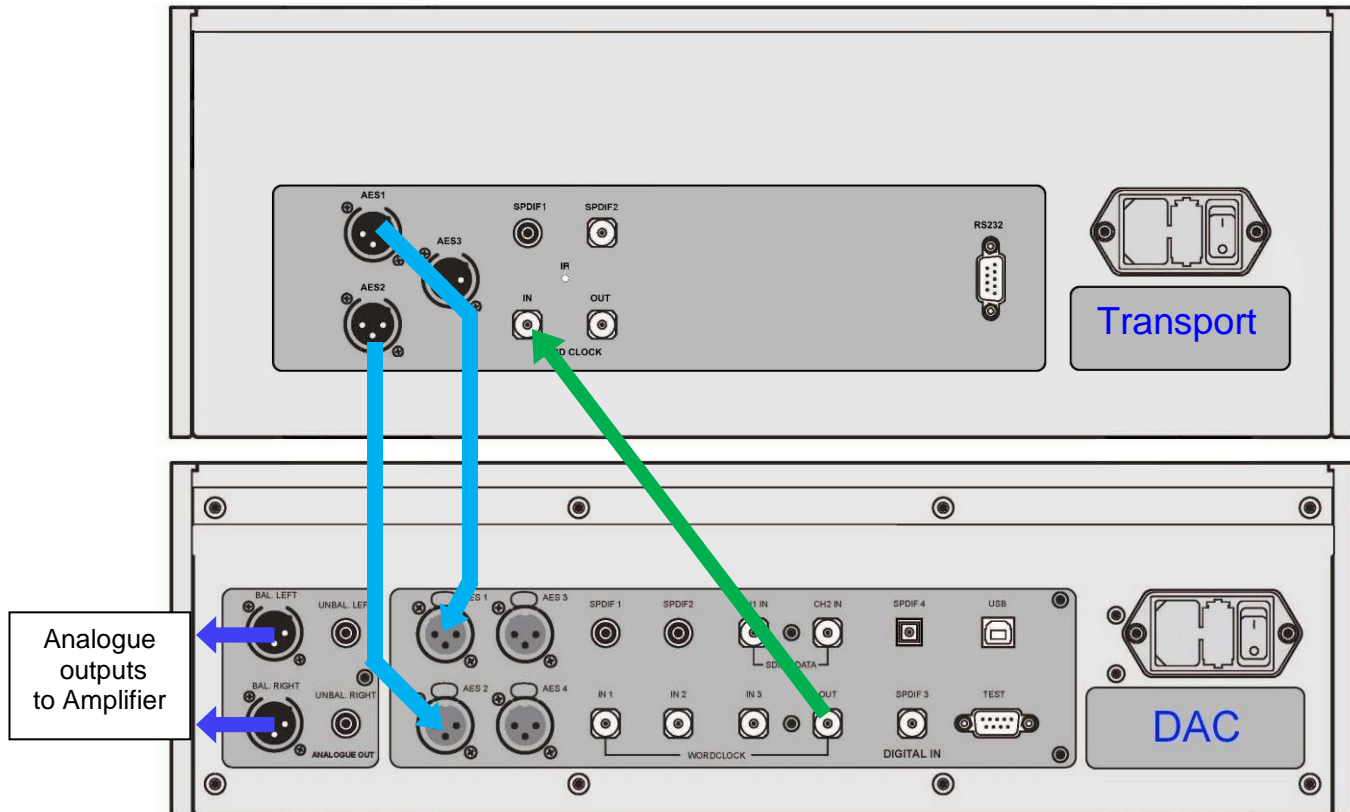


Figure 2 – Using the Vivaldi Transport with the DAC in Master Mode

- Use the DAC's **Input** button to select the input you want to use (**AES1+2** in the example).
- Connect the DAC's **Word Clock Out** connector to the Transport's **Word Clock In** connector.



Set the DAC's **Settings > Sync Mode** menu page to **Master** mode.



The Transport will lock to the Word Clock and display this icon.

### Using a Master Clock

The performance can be improved further by adding a Vivaldi Master Clock to the system.

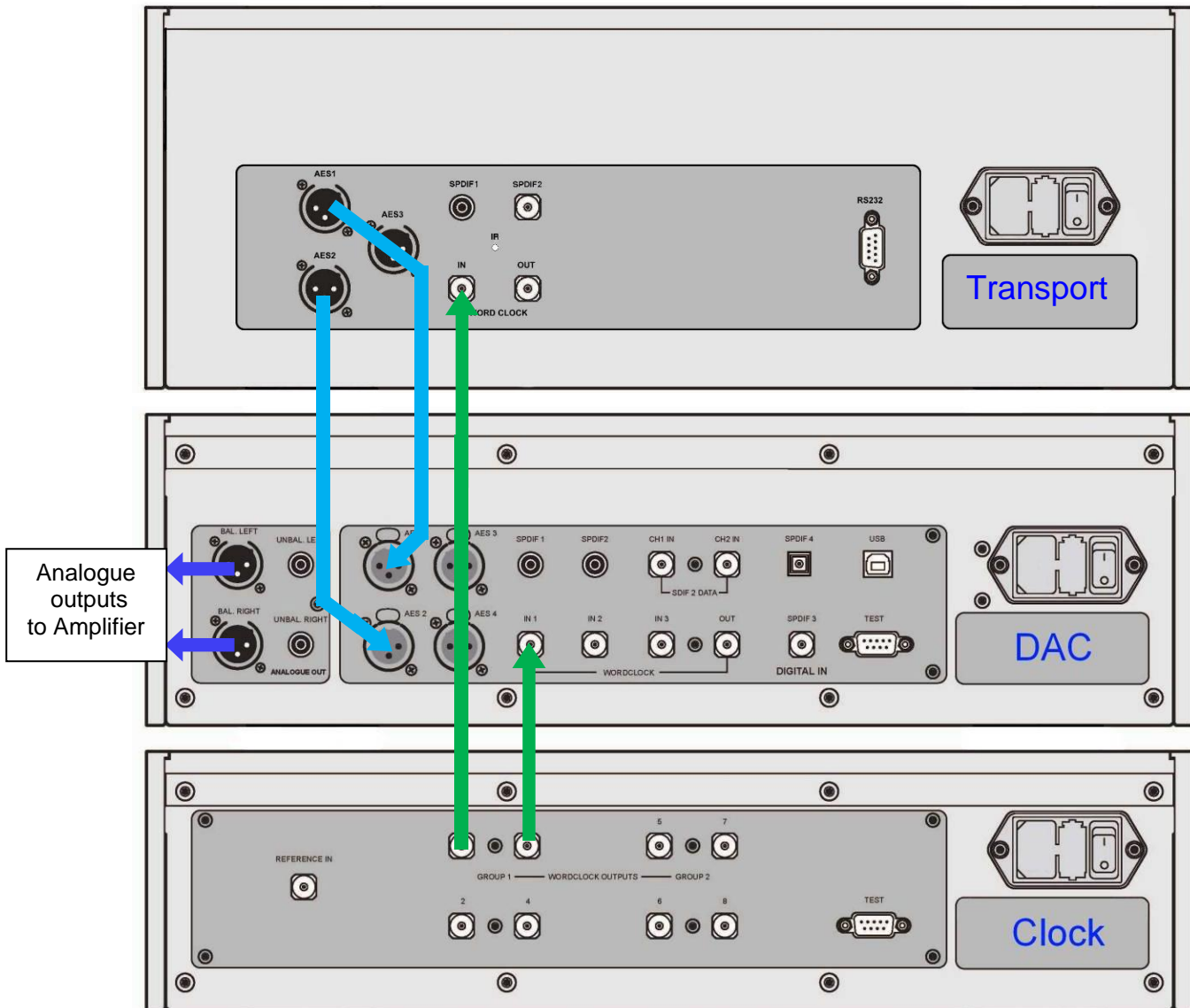


Figure 3 – Using the Vivaldi Transport, DAC and Clock together

- Use the DAC's **Input** button to select the input you want to use (**AES1+2** in the example).
- Connect one of the Clock's **Group 1 Word Clock Outputs** to the Transport's **Word Clock In** and the DAC's **Word Clock In 1**.
- Use the Clock's **Freq1** button to set the Group 1 outputs to **44.1kHz**.



The Transport will lock to the Word Clock and display this icon.



Set the DAC's **Settings > Sync Mode** menu page to **Word Clock In1** and allow the system to re-lock.



The "Bad clock" icon indicates that the Transport is receiving word clock at a frequency other than 44.1, 88.2 or 176.4kHz and it cannot lock to it.

**Proceed to Step 3.**

### STEP 3 – Playing a Disc

- Press the **Stop/Eject** button.

The display will show **OPEN**.

- Load a CD or SACD into the tray with the label upwards and either push the tray in gently or press the **Stop/Eject** button again.

The display will show **CLOSE**, then **LOADING**. The disc type will be identified, either **CD** or the SACD logo will appear on the display, along with the number of tracks and the total playing time. The Transport will play the SACD layer of a hybrid disc by default, but if you wish, you can select the CD layer instead by pressing the **Layer** button.

- Press the **Play** button. Turn up the Volume to a comfortable level.

You should have audio. For all discs, the disc type and elapsed time will be displayed.

- Press the **Play/Pause** button to pause playing, press again to resume playing.
- Press the **Fwd** or **Rwd** button to skip to the next track or the previous track.
- Hold down the **Fwd** or **Rwd** button to jog through the track.
- Press the **Stop/Eject** button to stop the disc. Press it again to open the tray.

The Remote Control (sold separately) gives access to other features, such as track number selection, display time selection, repeat track or disc and programming a track sequence.

To program the track sequence 6 - 8, stop the disc and press the remote **Program** button – the Transport will display **PGM Mode** then **0PGM0**. As an example, press **6** or **06** – the display will change to **6PGM1**. Press **8** or **08** – the display will change to **8PGM2**. The remote **Clear** button cancels the last track entry. Start the disc to play the track sequence. To cancel Program Mode, press the remote **Program** button or open the CD tray.

The next step is crucial – sit back and enjoy the music.

When you have finished listening, you can either keep the system warm by setting it to Sleep mode (press the **Power** button briefly) or switch off (hold down the **Power** button until **SWITCHING OFF** is displayed, then release).

### Further suggestions

- If you wish, you can set the **AES1+2** output to generate **DXD** data (24/352.8) or **DSDx2** (1/5.644M) when playing a CD instead of **DSD**, by changing the **Settings > Upsampling Mode** menu page (see page **24**).
- If you are using the **AES1+2** output only, try setting the **PCM Enable** menu page to **Off** (see page **24**).
- If you are using a Vivaldi Master Clock, try turning the **Dither** feature on. Try changing the Clock frequency to **88.2kHz** or **176.4kHz**. Please refer to the Vivaldi Master Clock manual for more information.
- If you have a Vivaldi Upsampler, try driving it with CD data from one of the Transport's PCM outputs and setting the Upsampler's **Output** to **DSD** or **352.8** (DXD). Please refer to the Vivaldi Upsampler manual for more information.
- If you have a complete 4-box Vivaldi system, please see the Upsampler or DAC manuals for set-up information.
- If you turn on the **EasyPlay** feature in the Vivaldi DAC, loading a disc will automatically change the DAC's input to match the disc type. For example, loading an SACD can select the native DSD feed from the Transport, while loading a CD can select the data from a Vivaldi Upsampler.

## FRONT PANEL

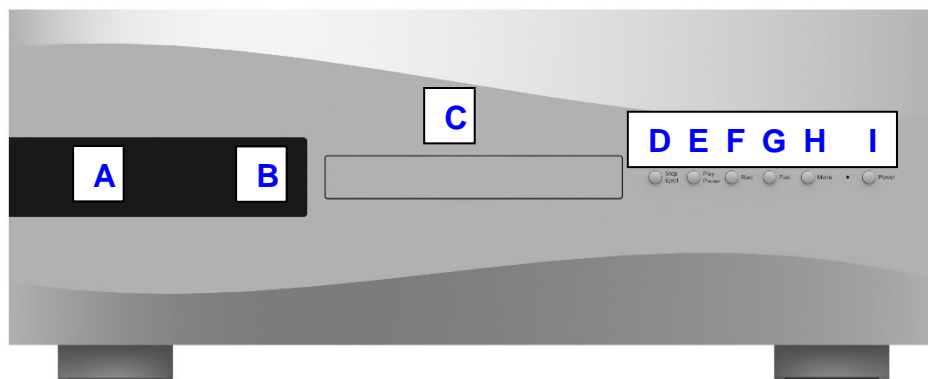
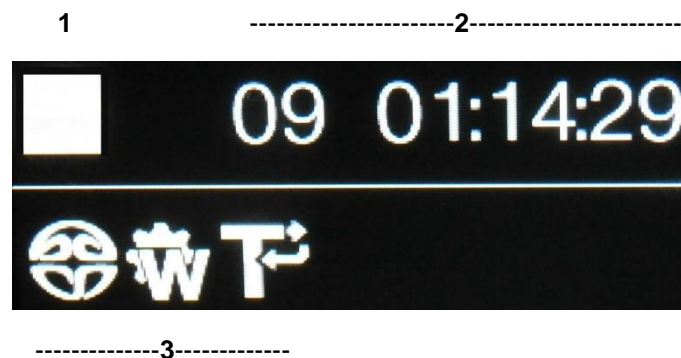


Figure 4 – Front panel

### Display

In normal use, the display (A) is split into 4 areas:



Area 1: The symbol indicates the mechanism status:

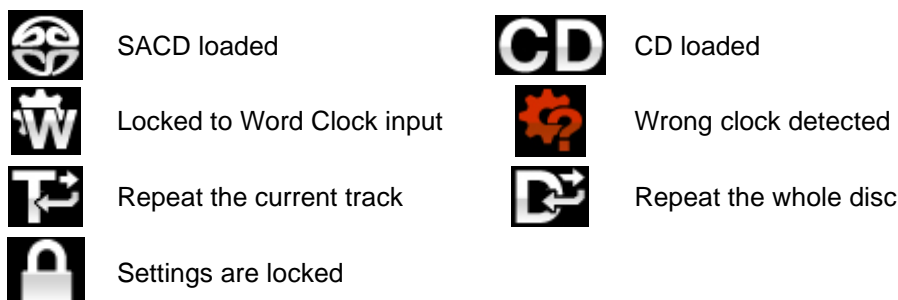


Area 2: When in play or pause modes, the current track number & track/disc time (hours, minutes, seconds) is shown.

When stopped, the number of tracks & total disc time is shown.

**Pxx** is displayed here when a track sequence is programmed and the disc is stopped. For example, **P03** indicates that a sequence of 3 tracks has been programmed.

Area 3: The status icons are displayed here:



When a track is selected by remote control, the track number is displayed in large text briefly.

Details of the menu displays are shown in the Menu section on page **21**.



To avoid unnecessary display wear, we recommend switching off or setting the unit to Sleep mode at the end of the listening session.

## Remote Control Receiver

A remote control is available separately for Vivaldi Transport II. Aim the remote control handset towards the receiver (B) for best sensitivity.

## CD Tray

When loading a CD or SACD into the CD tray (C), ensure the disc is central with the label upwards and is seated correctly. The tray will close if you press the **Stop/Eject** button or press the **Play** button or gently push it in a little. Let the tray close by itself, do not force it in.

## Stop / Eject Button

Press the **Stop / Eject** button (D) to stop playing a disc. Press again to open the CD tray. Press again to close the CD tray.

## Play / Pause Button

After a disc has been read, press the **Play / Pause** button (E) to start playing. Press again to pause and again to resume playing.

## Rwd Button

When a disc is playing, press the **Rwd** (rewind) button (F) briefly to select the previous track. Release the button to return to play mode.

When the menu is open, the **Rwd** button changes to the ◀ button, used to page backwards through the menu.

## Fwd Button

When a disc is playing, press the **Fwd** (forward) button (G) briefly to select the next track. Release the button to return to play mode.

When the menu is open, the **Fwd** button changes to the ▶ button, used to page forwards through the menu.

## Menu Button

Press the **Menu** button (H) to open the menu, select menu pages and change settings. See the Menu section on page **21** for information on using the menu features.

## Power Button

To switch on, ensure the rear panel power switch is set to **I** and press the **Power** button (I) on the front panel once.

To set the unit to sleep mode, press the **Power** button once. The main display will turn off, the LED beside the button will illuminate and the mechanism will stop, but the unit will remain close to running temperature. Press again to return to normal operation.

To switch off, hold down the **Power** button for about 5 seconds until **SWITCHING OFF** appears on the display, then release it.

When the menu is open, press the **Power** button to close the menu.

## REAR PANEL

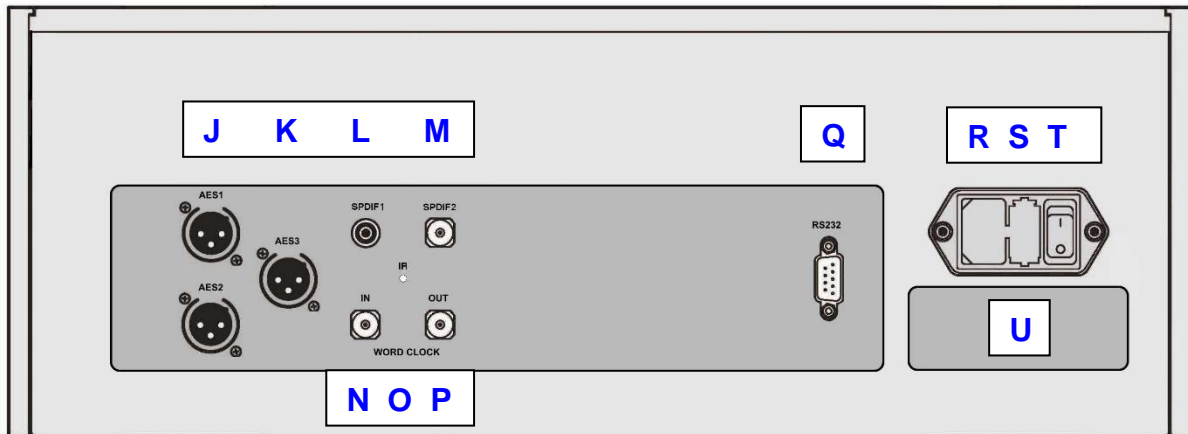


Figure 5 – Rear panel

### AES Digital Outputs

The **AES1** and **AES2** outputs (J) form a Dual AES pair. They output encrypted DSD data when an SACD is playing. When playing a CD, the outputs can be set to output either encrypted **DSD** or **DXD** (24 bits at 352.8kS/s) or **DSDx2** (1 bit at 5.644MS/s), depending on the setting of the [Settings > Upsample Mode](#) menu page. **AES1+2** is the main output.



The **DSD** and **DXD** output modes are compatible with the Vivaldi DAC, Rossini DAC, Rossini Player, Bartok DAC, Lina Network DAC, Scarlatti DAC v1.30, Paganini DAC v1.30 or Debussy DAC v2.30. Encrypted DSD mode is unlikely to be compatible with other manufacturers' products.

The **DSDx2** output mode is compatible with Vivaldi DAC v2.00 onwards, Rossini DAC, Rossini Player, Bartok DAC, Lina Network DAC or Debussy DAC v2.30.

The **AES3** output carries 16/44.1 data whether a CD or SACD is playing.

### SPDIF Digital Outputs

The unit features two co-ax SPDIF outputs, labelled **SPDIF1** (L – RCA connector) and **SPDIF2** (M – BNC connector). Both output 16/44.1 format data, whether a CD or SACD is playing.

### Word Clock Input / Output

The **Word Clock In** connector (N) will accept standard word clock at 44.1 or 88.2 or 176.4kHz from a master clock or a DAC in master mode.



Once the unit has locked to the external clock, this icon appears on the display.

The **Word Clock Out** connector (P) carries a 44.1kHz word clock.

Word clock is used for synchronisation only, it does not carry digital data.

### IR Remote Receiver

This secondary IR remote receiver (O) is intended to be used with a household automation system, as an alternative to RS232.

## RS232 interface

This **RS232** interface (Q) has two modes, set by the [Settings > RS232](#) menu page.

- **B**inary mode is used to remotely control the unit during automated production testing at *dCS*.
- **T**ext mode is for use with a Vivaldi Upsampler with dCS Mosaic Control or if you would like to use a household automation system.

The interface is designed to be used with a “straight through” cable, wired pin 1 to pin 1, etc.

The pin connections are:

- Pin 2 – *dCS* unit transmit
- Pin 3 – *dCS* unit receive
- Pin 5 – ground
- Shell – cable screen & drain wire

## Mains inlet

Power is connected via a standard IEC320 connector (R), protected by a fuse (S) and isolated by a 2-pole power switch (T).

## Label

The label (U) states the unit's serial number and the nominal voltage to which the unit is set. It is important to quote the serial number if you need assistance.

# THE MENU

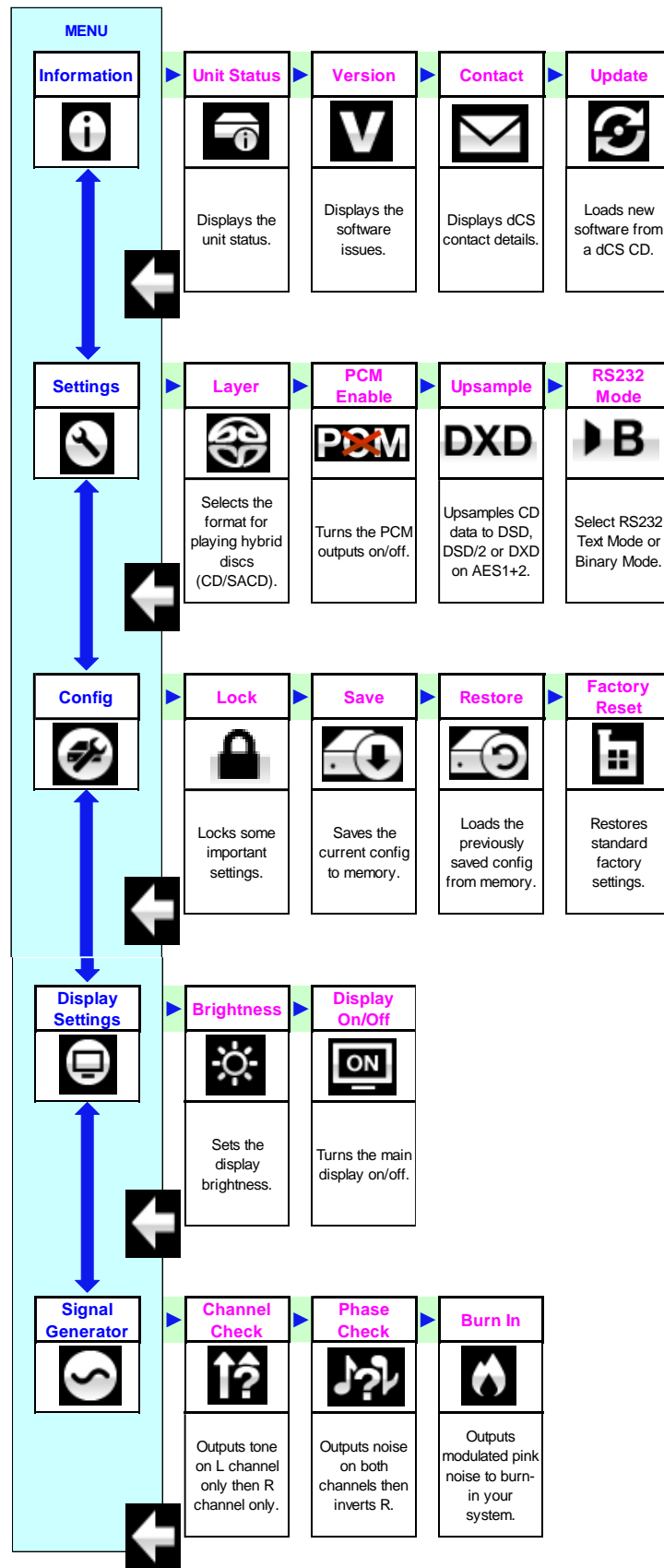


Figure 6 – The menu sequence

## Using the Menu

The menu gives the user access to a range of additional features. It also allows new features and performance enhancements to be added later by software updates.

The menu is controlled by four buttons.

- Press the **Menu** button to open the menu or select a setting.
- Press the **▶** button to page forward through the menu.
- Press the **◀** button pages backward through the menu.
- Press the **Power** button to close the menu or just wait 10 seconds.



Use the Menu Guide sheet to help you find the right menu page.

Each unit in the Vivaldi range has either four or five top-level menu pages:



The **INFORMATION** menu gives unit set-up details, software issues, serial number and contact details.



Each model has a different **SETTINGS** menu, which allows you to set some features that are not directly accessible from the front panel.



The **CONFIGURATION** menu allows you to lock important settings, save a standard setup and reset the unit.



The **DISPLAY SETTINGS** menu is used to adjust the display.



The **SIGNAL GENERATOR** menu contains test and set-up routines.

Use the **▶** button to move the blue highlight to the menu you want, then press the **Menu** button to select it. The next menu level down is displayed. Use the **▶** button to move the highlight to the menu page you want, then press the **Menu** button to display the information or change the setting.



Select the return icon to go back to the previous menu level.

## INFORMATION Menu

### Unit Status



The **Unit Status** page displays:

- The long version of the serial number, including the hardware configuration code.
- Internal temperature ....°C
- The clock frequency detected on the Word Clock Input .....Hz

Use the ◀ ▶ buttons to scroll up or down the list. This page does not time out, press the **Menu** button to exit.



If your system is not behaving as you expect, the **Unit Status** page can help you find set-up or connection errors.

### Version



The **Version** page displays the software versions loaded in the unit. Please have this information ready if you contact your dealer for any reason.

- Main: 1.xx

, press the **Menu** button to exit.

### Contact



The **Contact** page displays the *dCS* web-site URL and support email address. This page does not time out, press the **Menu** button to exit.

If you have any difficulty, please contact your dealer for help first.

### Update



The **Update** feature allows you to load new software into your Transport. Please follow the instructions supplied with the update disc carefully.



If you accidentally start an Update, do not worry. The unit will automatically detect it is not receiving updated software and will abort the process. The software will not have been changed.

## TRANSPORT SETTINGS Menu

### Layer



When a hybrid disc is loaded but is not playing, the **Layer** page allows you to select either the **SACD** layer...



...or **CD** layer. While changing layers and re-reading the disc, **Changing Layer - Please Wait** is displayed.

### PCM Enable



This page turns the 16/44.1 **AES3**, **SPDIF1** and **SPDIF2** outputs on...



...and off. This gives a quieter electrical environment when you are using the **AES1+2** interface only.



Remember to turn the PCM outputs on again if you want to use them!

### Upsampling Mode



While playing a CD, this page sets the format of the **AES1+2** Dual AES interface to either encrypted **DSD** (1 bit at 2.822MS/s)...



...or **DXD** (24 bits at 352.8kS/s)...



...or **DSDx2** (1 bit at 5.644MS/s) in DoP format.



There is no need for an "Upsampling Off" setting.

If you want to listen to the 16/44.1 data unprocessed, connect the **AES3** output or one of the SPDIF outputs directly to the DAC and select that input.

### RS232 Mode



Sets the RS232 interface to either **T**ext mode for use with a 3<sup>rd</sup>-party control system or...



...*dCS* production **B**inary mode, which is intended for factory use or when linked to a Vivaldi Upsampler / DAC.

## CONFIGURATION Menu

### Settings Lock



When set to **Locked**, this icon is displayed and the following settings cannot be changed:

- **PCM Enable**
- **Upsample Mode**
- **Save Configuration** is disabled
- **Restore Configuration** is disabled
- **Factory Reset** is disabled



Set to **Unlocked** if you need to change these settings.

### Save Configuration



Once the unit is set up the way you want it, select **Save** to store the settings in memory. If you deliberately change the setup later and want to keep it, select **Save** again to store the changes.

### Restore Configuration



If the unit settings are accidentally changed, select **Restore** to reload the settings you saved earlier.

### Factory Reset



Resets the unit to standard settings. These are:

- **PCM Enable** to **On**.
- **Upsample Mode** to **DSD**.
- **Brightness** to maximum.
- **Display** to **On**.
- **RS232 Mode** to **Binary**.

## DISPLAY SETTINGS Menu

### Brightness



Set the display **Brightness** to a comfortable level using the ◀ or ▶ buttons. Press the **Menu** button to exit.

### Display On/Off



This page is usually set to **On**.



When set to **Off** and the menu closes, the display will turn off after a few seconds. The display will turn on briefly when a control setting is changed. The display will stay on if the CD tray is open or the menu is open.

## GENERATOR Menu

### Channel Check



A routine to test the system for swapped channels. A tone is output on the left channel only while the display shows **Left**, then the right channel only while the display shows **Right**. If these are the wrong way around, the left and right channels are swapped somewhere in your system.

### Phase Check



A routine to test the system for phase reversals. Noise is output in phase on both channels while the display shows **In Phase**. Press the **Menu** button, the noise on the right channel is inverted while the display shows **Out of Phase**. The first burst should produce a central image, the second burst should not. If these are the wrong way around, one channel in your system is phase inverted. Press the **Power** button to stop the test and return to the menu.

### Burn In



A procedure to condition your system. The unit displays **Burn In Caution! Loud**, then outputs modulated pink noise that ramps up and down slowly in level. Press the **Menu** or ◀ or ▶ buttons to stop the procedure.



Please ensure that the volume level is reasonable, as careless use of the **Burn In** feature can damage your amplifiers and loudspeakers. dCS will not be liable for such damage.

## SPECIFICATION

<b>Mechanism type</b>	Dual laser CD/SACD mechanism.
<b>Digital outputs</b>	Dual AES interface on 2x 3-pin male XLR connectors ( <b>AES1+2</b> ). While an SACD is playing, the interface outputs encrypted DSD data. While a CD is playing, the <b>Settings &gt; Upsample Mode</b> menu page sets the interface to output either encrypted <b>DSD</b> data (1 bit at 2.822MS/s) or <b>DXD</b> data (24 bits at 352.8kS/s) or <b>DSDx2</b> data (1 bit at 5.644MS/s in DoP format).
	AES interface on 3-pin male XLR connector ( <b>AES3</b> ), outputs 16/44.1 data, whether a CD or SACD is playing.
	2x SPDIF on 1x RCA Phono and 1x BNC connectors. Each outputs 16/44.1 data, whether a CD or SACD is playing.
<b>Clocking</b>	<b>Word Clock Output</b> on 1x BNC connector. With the Transport in Master mode, a TTL-compatible 44.1kHz word clock derived from the internal crystal oscillator is available on this output. The calibration accuracy when shipped is +/-10ppm, not temperature compensated. Calibration usually remains stable for several years.
	<b>Word Clock Input</b> on 1x BNC connector, accepts standard word clock at 44.1, 88.2 or 176.4kHz. Sensitive to TTL levels. Lock range is +/-300ppm.
<b>Size and weight</b>	444mm (17.5") long x 422mm (16.6") deep x 178mm (7.0") high. Allow extra depth for cable connectors. Allow space for air flow around the unit.  23kg (50.7lbs).
<b>Power requirements</b>	Internally set to either 100, 115/120, 220 or 230/240V AC, 50/60Hz. Power consumption: 16W typical, 50W maximum. Consumes less than 0.5W when powered down from the front panel.

These specifications are subject to change without notice.

## MAINTENANCE AND SUPPORT

### Service and Maintenance

dCS audio products are designed to not need regular maintenance and contain no user serviceable parts other than the rear panel mains fuse. If your unit is damaged in any way, please contact your dealer.

### Replacing a Blown Mains Fuse

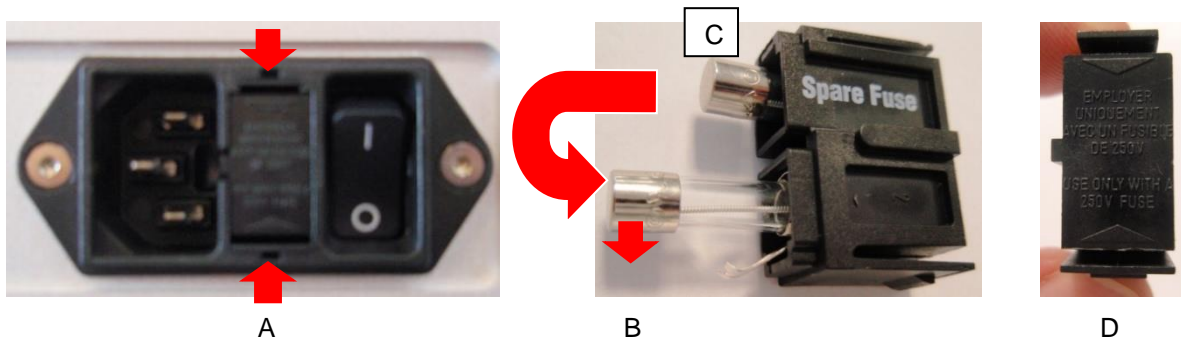
There is a mains fuse below the power inlet, accessible from the outside of the unit. If the fuse blows, it may be changed by the user. The current consumption of the unit is very low, so it only blows if power surges occur, or there is a fault in the unit. Usually power surges cause no other damage, but if the fuse blows repeatedly on replacement, some other damage will have been done - contact your dealer to arrange repair.

Fuse type: 20 x 5mm T 1A L fuse



If the fuse should fail, it is essential that it is replaced with one of the same type and rating. Failure to do so could result in damage to the unit, risk of fire or electric shock and will invalidate the warranty. Fuse failure is rare!

Referring to the diagram below, remove the power cable, use your fingernails to catch the two tabs of the fuse holder (A), push them together to release the clips and pull the fuse holder out. Pull out the blown fuse from the lower position (B) and discard it. Either move the Spare Fuse (C) to the lower position or fit one of the fuses from the manual pack. Orient the fuse holder as shown (D) and push the holder back into the power inlet so that it clicks home.



### Cleaning the case

The front and back panels of your dCS equipment are machined from very high grade aluminium. Great care has been taken to create the finish of the aluminium throughout the engineering process from the raw solid material to the finished piece.

To remove loose dust or finger marks from the case, we recommend that you use a clean, dry, lint-free cloth.

To restore the finish, we recommend applying small quantities of a lanolin based cleaner, using a clean, dry, lint-free cloth and then wiping off. Do not allow lanolin to collect around the buttons.

Small amounts of glass cleaner containing ammonia may be used to clean other surfaces, but avoid spraying onto the connector contacts.

## Limited Warranty

### General

dCS warrants this product against defects in materials and workmanship for a period of 3 years from the date the unit was originally shipped from dCS. If the product is purchased and registered with dCS within 6 months of the date the unit was originally shipped from dCS, we will start the warranty on the purchase date. For units registered later than 6 months from the ship date, we will start the warranty from the ship date unless the registration is supported by the original sales invoice. During the warranty period, dCS will repair or, at our absolute discretion, replace a faulty product. Warranty repairs must only be carried out by dCS or our authorised service agents. Please contact your dealer if your unit requires service.

To register this product, either register online at [www.dcsaudio.com](http://www.dcsaudio.com) or complete the **Product Registration** form within 30 days of the sale and return it to dCS. On receipt of the registration, dCS will add your contact details to our customer database. dCS will use this information for warranty purposes only, we will not contact you directly for reasons relating to sales and marketing.

This warranty applies to the original owner, it is not transferable.

### Warranty Exclusions

The Warranty does not cover wear and tear.

The Warranty on this product will be void if:

- the product is misused in any way.
- any unauthorised modifications or repairs are carried out.
- the product is not used in accordance with the Operating Conditions stated in this manual.
- the product is serviced or repaired other than by dCS or our authorised service agents.
- the product is operated without a mains earth (or ground) connection.
- the unit is returned inadequately packed.

dCS reserve the right to apply a service charge if a product returned for warranty repair is found to be operating correctly, or if a product is returned without a returns number being issued.

This warranty covers parts and labour only, it does not cover shipping charges or tax/duty.

Our dealers or distributors are NOT authorised to extend the terms of this warranty, dCS cannot accept responsibility for any attempt to do so.

Products re-sold by dCS on a “used” basis may be subject to reduced warranty terms.

### Obtaining Service

Should you encounter a problem, contact your authorised dCS dealer for advice, quoting the model, the full serial number, software version number, and giving a detailed description of the fault. Your dealer will advise you fully on actions that need to be taken. When returning a unit, the original packaging should be used to avoid transit damage. Replacement packaging sets may be purchased from dCS.

During the Warranty period, there will normally be no charge for parts or labour.

### Operating Conditions

- The supply voltage must remain within +/-10% of the A.C. voltage specified on the back panel.
- The supply frequency must be in the range 49Hz to 62Hz.
- Ambient temperature range: 0°C (32°F) to 45°C (113°F), non-condensing.
- Do not install the unit near heat sources such as radiators, air ducts, power amplifiers or direct strong sunlight.
- If in doubt, the easy test is – the unit is happy to work anywhere a human is.

## If you need more help

In the first instance, you should contact your dealer. If they cannot resolve the issue, contact your national distributor.

Manufactured by:

Data Conversion Systems Ltd.  
Unit 1, Buckingway Business Park,  
Anderson Road,  
Swavesey,  
Cambridgeshire. CB24 4AE  
UK

[www.dcsaudio.com](http://www.dcsaudio.com)

This user manual may be downloaded free of charge from our web-site.

A bound copy of this manual may be ordered from *dCS*.

## Software History

*dCS* products make extensive use of software configurable chips – FPGAs and DSPs. This gives us the ability to update our products to add extra features, update digital interface standards or make performance improvements by loading new software. Occasionally, a hardware upgrade may be necessary also to increase the “capacity” of the electronics, add extra connectors or extra front panel controls.

Please note that not all software updates produce an audible improvement. We recommend that you keep your software up to date. Check the *dCS* web-site occasionally for news of the latest software updates.



Update discs are available from our distributors. Before requesting an update disc, please open the **Info > Version** menu page and check the **Main** version to verify that an update is required.

This manual is for Vivaldi Transport II software version 1.0x.

Issue 1.00	The first issue.
------------	------------------

**INDEX****O**

0/44.1 display ..... 11

**A**

acceptable disc types ..... 9

AES output ..... 19

AES3 output ..... 11

**B**

basic operation ..... 14

burn in ..... 26

**C**

cables ..... 10

CD tray ..... 17

channel check ..... 26

cleaning ..... 28

condensation ..... 6

configuration

restore ..... 25

save ..... 25

configuration menu ..... 25

contact ..... 23

**D**

DAC master mode ..... 12

display ..... 16

brightness ..... 26

off ..... 26

display menu ..... 26

Dual AES output ..... 11, 19

**F**

front panel ..... 16

fuse, replacing ..... 28

**G**

generator menu ..... 26

**I**

information menu ..... 23

**L**

layer ..... 24

lock ..... 25

**M**

menu ..... 21

close ..... 18

configuration ..... 25

display ..... 26

generator ..... 26

information ..... 23

PCM enable ..... 15

settings ..... 24

upsampling mode ..... 15

using ..... 22

menu back button ..... 17

menu button ..... 17

menu forward button ..... 17

**O**

operating conditions ..... 29

output

AES ..... 19

AES3 ..... 11

connecting ..... 11

Dual AES ..... 11, 19

SPDIF ..... 11, 19

**P**

PCM enable ..... 24

phase check ..... 26

play/pause button ..... 17

playing a disc ..... 14

positioning ..... 5

power button ..... 18

power off ..... 18

power up ..... 10

**R**

rear panel ..... 19

remote control ..... 17, 19

reset ..... 25

restore configuration ..... 25

RS232 ..... 14, 20, 24

**S**

safety ..... 6, 8

save configuration ..... 25

serial number ..... 20, 23

service ..... 28

settings menu ..... 24

setup guide ..... 10

sleep ..... 18

software ..... 23, 30

SPDIF output ..... 11, 19

specification ..... 27

status ..... 23

stop/eject button ..... 17

sync mode ..... 12

sync to Master Clock ..... 13

**U**

update ..... 23, 30

upsampling mode ..... 24

**V**

version ..... 23

voltage ..... 20

**W**

wake ..... 18

warranty ..... 29

word clock input ..... 19

word clock output ..... 19